

# Module 4 Extended Grazing



# Winter Grazing

- Dormant Season
- Deferred Grazing
- Residue Grazing
- Annual Crop Grazing
- Bale Grazing
- Silage Grazing





# Dormant Season Grazing

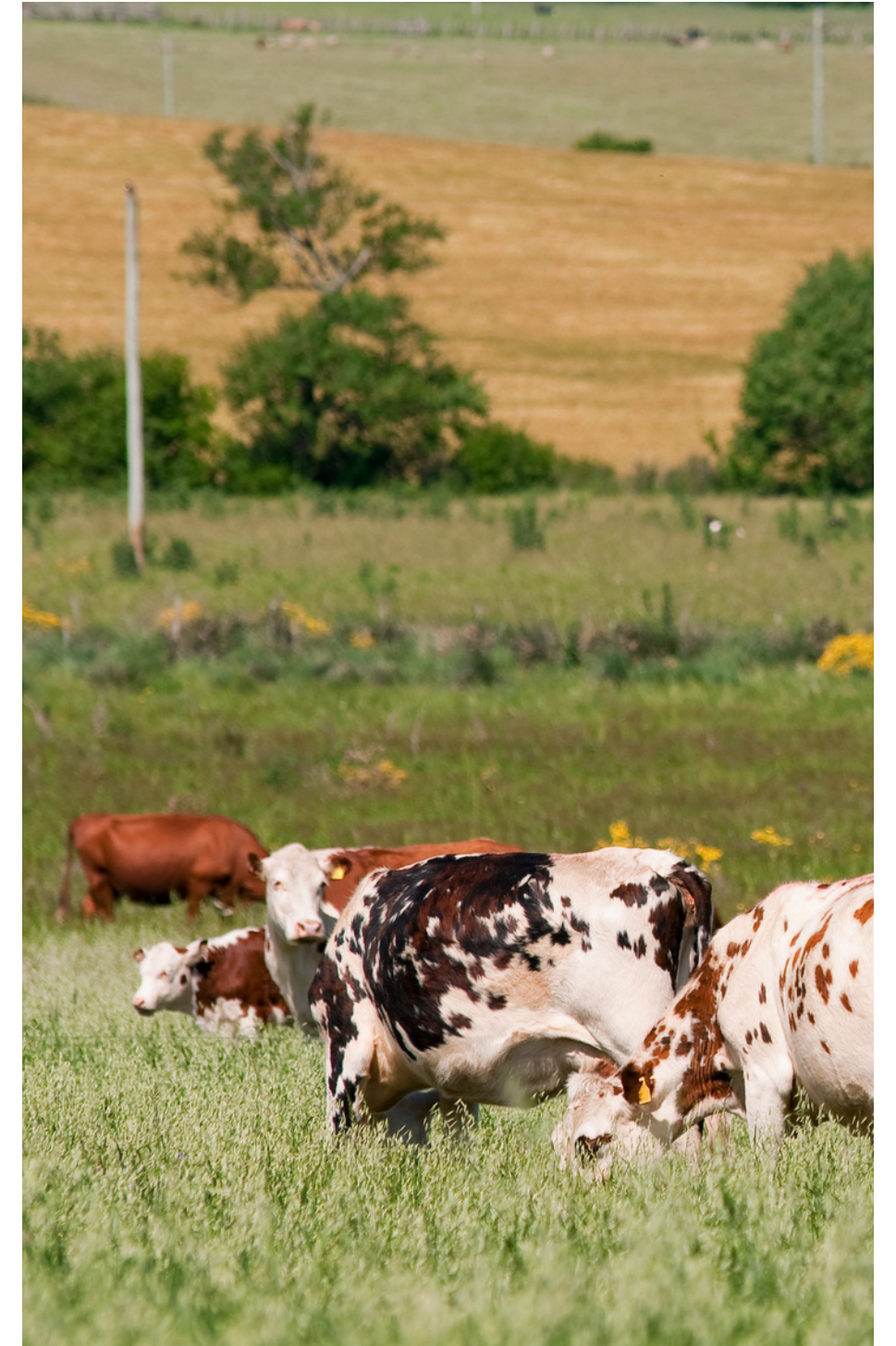
- Summer Management
- Lengthen the Grazing Season
- Killing frost is a tool





# Dormant Season Grazing

- Summer Management
- Lengthen the Grazing Season
- Killing frost is a tool
- Disposable herd
- Graze the second cut?





# Deferred Grazing

- Full or part of the season stockpile
- Regeneration tool
- Save lowland areas
- May need supplementation



# Residue Grazing

---

- Chaff and straw
- Swath, bunch or stubble
- Chaff buncher, chaff collector
- May need supplementation







# Feeding & Supplementation

- 
- Ration off low-quality feed
  - Electric fence
  - Increase supplement quality
  - Protein or mineral imbalances
  - Add polyculture





# Annual Crop Grazing

**Cereal Crop**



**Cover Crop**





# Annual Crop Grazing

**Salvage Crop**



**Standing Corn**



# Bale Grazing

**Lowers labour and  
equipment costs**



**Builds water holding  
capacity and adds  
fertility**





# Bale Grazing

**Graze period**

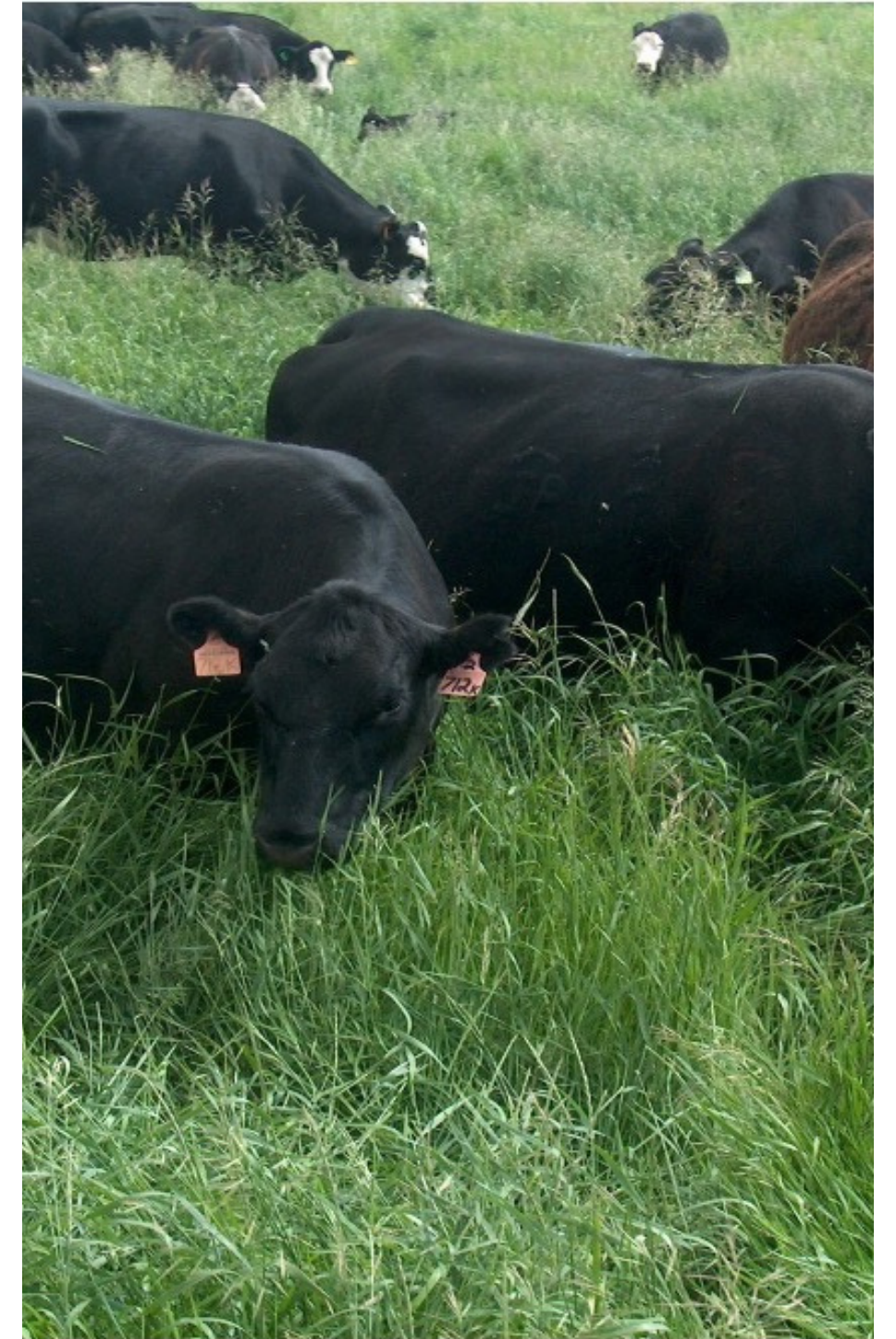


**Builds water holding  
capacity and adds  
fertility**



# Bale Grazing

- Added fertility
- Increased water holding capacity
- Soil health





# Silage Crop Grazing

- Added fertility
- Increased water holding capacity
- Soil health



# Imported Feed

---

**Fertilizer value = \$0.30/cow/day**

---

- 200 cows for 120 days
- \$7,200 Fertilizer value
- Plus the value of organic matter added
- 5 years = \$36,000 of fertilizer value







# Imported Feed

**Winter feeding  
calculator**

**Contribution margin**

**Fertilizer value**

**New paradigms**