

BACKWARDS THINKING

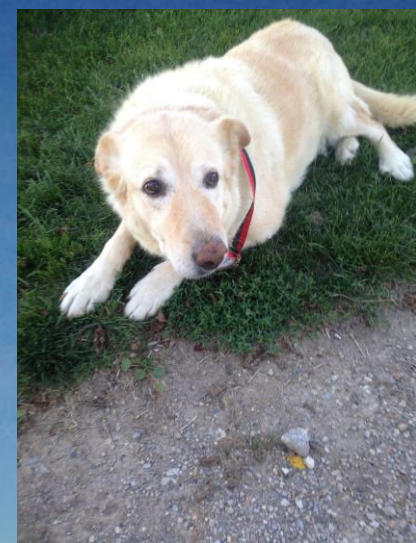
LEHRBASS FARMS



PASTURE INSTEAD OF CORN AND SOYBEANS



LEHRBASS FAMILY FARM



SANDY



LEHRBASS
— FARMS —



MAX TINA CHARLIE TIM

STARTED OUT CASH CROPPING

- STARTED SHARE CROPPING MY GRANDFATHERS FIELD WHEN I WAS 15 . GROWING SOYBEANS CORN AND WHEAT
- RIDGETOWN COLLEGE 2001 TO 2003
- BOUGHT THE HOME FARM IN 2006
- MARRIED IN 2007, KIDS IN 2010 AND 2011

FARMED 200 ACRES AND COULDN'T GET AHEAD

2013

- STARTED LOOKING AT THE COST OF OWNING EQUIPMENT OR HIRING CUSTOM WORK
- I COULD HAVE GREAT YIELDS AND DECENT PRICE BUT IF I HAD TO PUT MONEY INTO THE EQUIPMENT I COULDN'T BREAK EVEN.
- COULDN'T BUY MORE LAND AT 10-12 THOUSAND PER ACRE





2014 WE PLANTED A FENCE

- WE SEEDED DOWN 90 ACRES TO A HIGH PERCENTAGE LEGUME PASTURE
- IN NOVEMBER THE GUYS FROM BRUSSELS AGRI SERVICE INSTALLED PERIMETER FENCING AS WELL AS A DIVIDING ALLEY
- PICK UP TRUCK TRAFFIC INCREASED ON MY ROAD AND THEY WERE GOING SLOW

WITH A LITTLE HELP

- I MADE USE OF SPECIES AT RISK FUNDING FOR FENCING TREE LINES AND DIVIDING FENCES
- GROWING FORWARD PROGRAM HELPED TO BUY WATER LINES SO I COULD ROTATIONALLY GRAZE
- SPENT THE EXTRA MONEY ON A FENCER THAT COULD TEXT ME IF THERE WAS A PROBLEM

WE HAVE SEEN IMMEDIATE RESULTS

BOBOLINK NEST



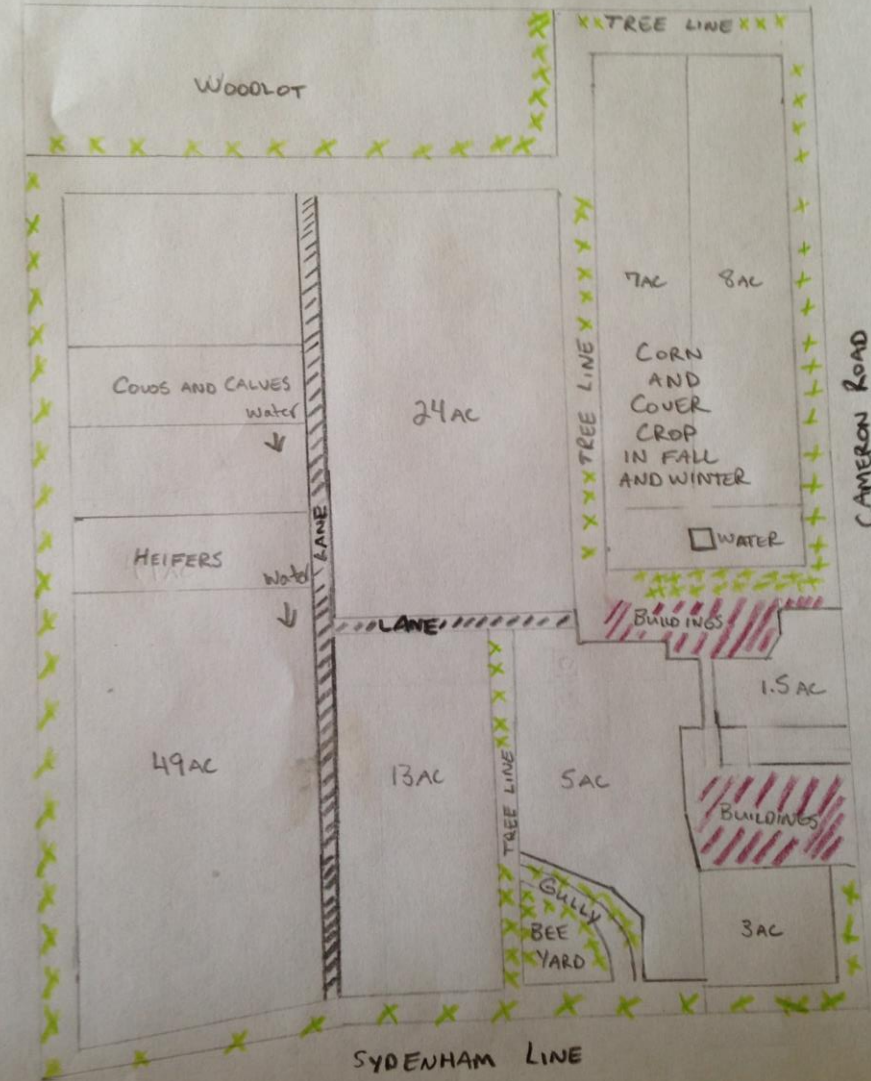
VIEW FROM THE GRAIN LEG



GRAZING PLAN

APRIL TO SEPTEMBER

- IN MID APRIL I'LL SEND REPLACEMENT HEIFERS OR STOCKER STEERS OUT AND START ROTATING THEM TO A NEW PIECE OF PASTURE EVERY DAY.
- WHEN THE GROUND FIRMS UP, USUALLY FIRST WEEK OF MAY, THE COWS GO OUT TO START FOLLOWING THE STEERS OR HEIFERS AROUND THE PASTURE
- ONE Paddock SPACE BETWEEN THEM



GRAZING PLAN

SEPTEMBER TO MARCH

- I'LL FEED HAYLAGE ON THE PASTURE FOR A WEEK TO HELP TRANSITION THE PAIRS TO THE STANDING CORN
- THE HAYLAGE GETS FED EVERY OTHER DAY ALL WINTER AND THEY GET A NEW MEASURED PIECE OF STANDING CORN DAILY.
- THE MINERAL FEEDER IS NEVER ALLOWED TO BE EMPTY



INTERSEEDING FOR MORE PROTEIN

LATE JULY



LATE OCTOBER



VIDEOS OF COWS IN CORN

FIRST TIME IN THE CORN



SEASONED VETERANS



ECONOMICS OF GRAZING CORN

COST OF GROWING CORN

Expenses	Total	Per Acre
Cultivate	\$ 600.00	\$ 40.00
Starter	\$ 800.00	\$ 53.33
Plant	\$ 315.00	\$ 21.00
Spray	\$ 626.00	\$ 41.73
Seed	\$ 1,732.00	\$ 115.47
Nitrogen	\$ 710.00	\$ 47.33
Inter Seed	\$ 532.00	\$ 35.47
Sub Total	\$ 5,315.00	\$ 354.33

COSTS GRAZING CORN

Expense	Per Day	Pair/Day	Pair For 180 Days
Mineral	\$ 5.28	\$ 0.10	\$ 18.64
Corn	\$ 21.26	\$ 0.42	\$ 75.04
Haylage	\$ 44.87	\$ 0.88	\$ 158.36
Straw	\$ 7.50	\$ 0.15	\$ 26.47
Time	\$ 8.66	\$ 0.17	\$ 30.56
Total	\$ 87.57	\$ 1.72	\$ 309.07
Total Without Haylage	\$ 42.70	\$ 0.84	\$ 150.71

COST TO WINTER THE TRADITIONAL WAY

IN THE BARN

Expense	\$ per Day	Per Pair	Pair for 180 Days
Feeding time 2 hours	\$ 52.00	\$ 1.00	\$ 180.00
Corn silage	\$ 21.43	\$ 0.41	\$ 74.18
Haylage	\$ 44.87	\$ 0.86	\$ 155.32
Mineral	\$ 5.28	\$ 0.10	\$ 18.28
Straw	\$ 52.50	\$ 1.01	\$ 181.73
Manure \$100/hour	\$ 71.00	\$ 1.37	\$ 245.77
Total	\$ 247.08	\$ 4.75	\$ 855.28

DIFFERENCE OF BEING DIFFERENT

- IN THE BARN FOR 180 DAYS \$855.28
- GRAZING CORN FOR 180 DAYS \$309.07
- EXTRA MONEY LAYING AROUND \$546.21

PLAN A



PLAN B

- I KEEP CORN SILAGE FOR FEEDING FAT CATTLE IN THE SUMMER MONTHS. IF THE WEATHER TURNS TOO WET THE COWS COME IN TO THE BARN
- I GRAZE THE SAME CORN FIELD FOR 5 YEARS THEN SEED PASTURE. IF THERE IS ANY COMPACTION THIS SHOULD HELP
- IT ALSO GIVES A CHANCE TO RENOVATE 15 ACRES AT A TIME

